



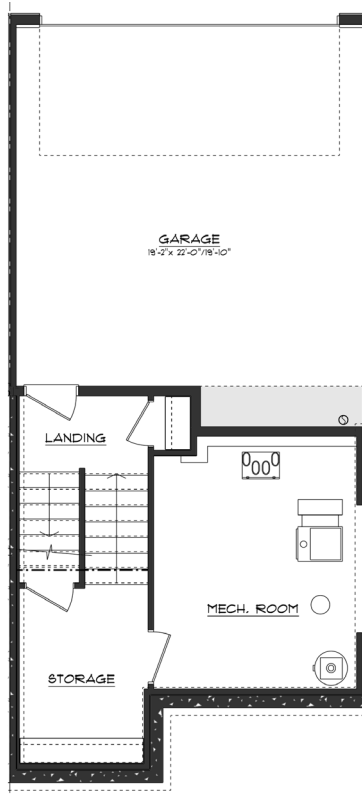
THE FLATS PHASE I: BESPOKE TOWNHOMES

9741 + 9745 101 STREET NW

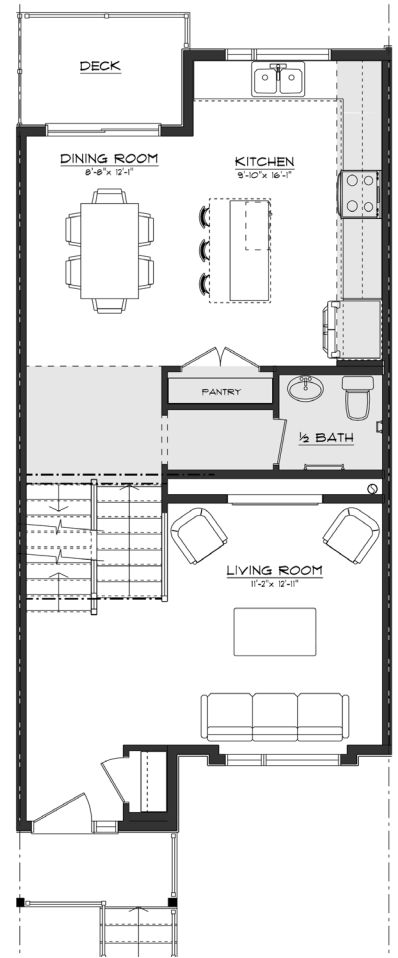
THE ASPEN

KEY FEATURES

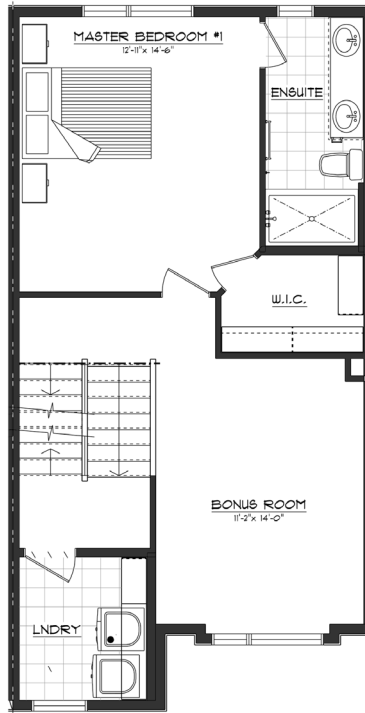
- Open-concept Main Floor with Spacious Kitchen and Island for Entertaining
- Electric fireplace in the Living Room
- Chic Open Riser Stairs*
- 2 Full Bathrooms + 1 Half-bath
- Dual Master Suites
- Second Floor Bonus Room
- Third Floor open-concept Loft
- Main Floor Deck with Gas Line + Private Rooftop Patio
- Double Attached Garage



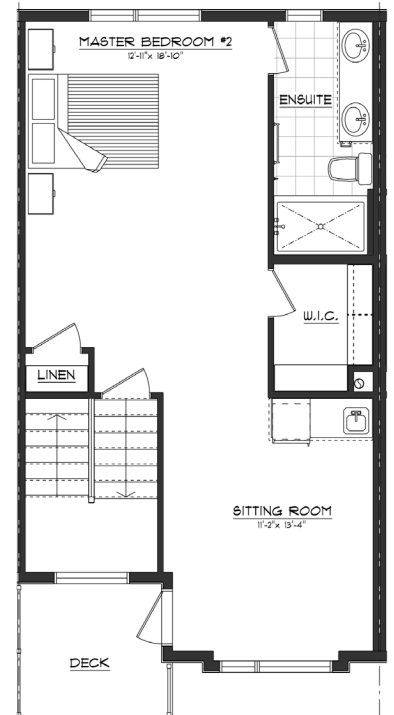
BASEMENT + GARAGE
685 sqft



1ST FLOOR
708 sqft



2ND FLOOR
665 sqft



LOFT
602 sqft

DISCLAIMER: Actual building units may not be exactly as shown. Renderings + blacklines are for illustrative purposes only. *Open riser stairs from the kitchen to the second floor as per plan.