



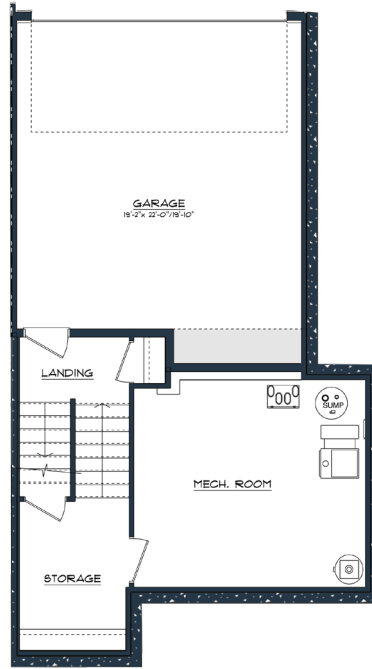
# THE FLATS PHASE I: BESPOKE TOWNHOMES

9727 101 STREET NW

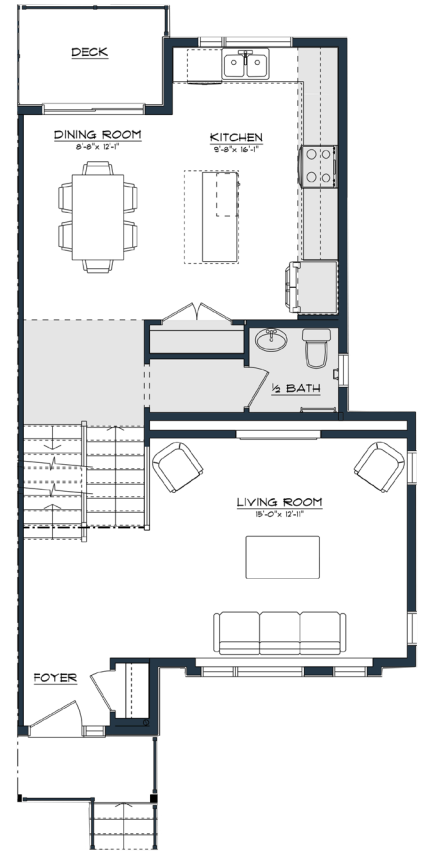
## THE BIRCH

### KEY FEATURES

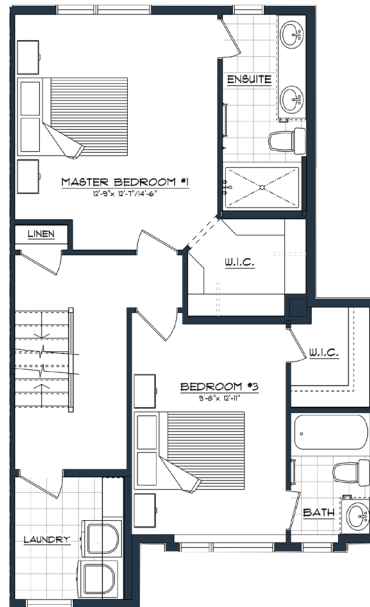
- Open-concept Main Floor with Spacious Kitchen and Island for Entertaining
- Chic Open Riser Stairs\*
- 3 Full Bathrooms + 2 Half-baths
- Dual Master Suites
- Secondary Bedroom
- Main Floor Deck with Gas Line + Extended Private Rooftop Patio
- Double Attached Garage



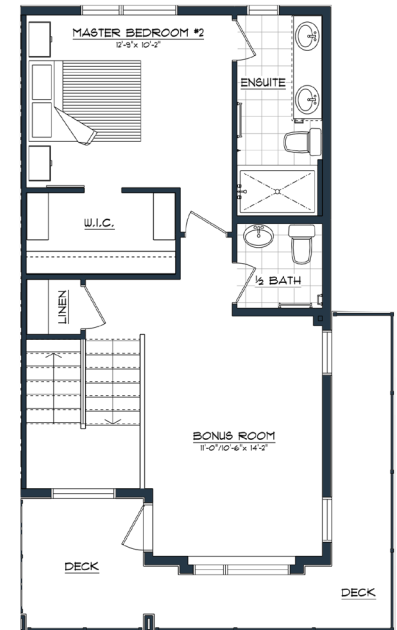
**BASEMENT + GARAGE**  
728 sqft



**1ST FLOOR**  
768 sqft



**2ND FLOOR**  
725 sqft



**LOFT**  
602 sqft